



DISTINCTIVE DESIGN HOMES

BY RUSTIC TOUCH



DISTINCTIVE DESIGN HOMES
BY RUSTIC TOUCH

Behind Distinctive Design Homes

The founders of Rustic Touch, Antony and Debra have been designing and building healthy homes on the Central Coast and Hunter Region since 1986.

The family business takes pride in utilizing Solar Passive principles and emphasizes sustainable building practices.

'Distinctive Design Homes' was created to offer you a niche pre-designed, cost-effective, and sustainable design range. D.D.H has a strong focus on quality, not quantity, with only a select number of distinctive design homes built in any year.

Every D.D.H design encapsulates all the sustainable design principles featured in a custom Rustic Touch home. Along with this, having in-house designers and builders, we ensure that we manage the entire process from start to finish making your design/build journey an easy and enjoyable one.



GOOD CROSS VENTILATION



USE OF THERMAL MASS



USING PRODUCTS WITH LOW
FORMALDEHYDE EMISSIONS



CAREFUL PLACEMENT OF
ENERGY SOURCE



GOOD ZONING FOR HEATING
AND COOLING



USE OF NATURAL LIGHT



PREVENTION OF MOISTURE
TRANSFER IN EXTERNAL WALLS



USE OF SUSTAINABLE BUILDING
PRODUCTS



What makes Distinctive Design Homes different

- ✓ Distinctive Design Homes are fixed price 'turnkey' homes with no hidden costs.
- ✓ D.D.H designs respond to your block's characteristics, ensuring that it takes advantage of views, orientation and the surrounding environment whilst reflecting your lifestyle.
- ✓ D.D.H homes Passive Solar designs, that aim to make your home as comfortable as possible all year round saving you money in the long term.
- ✓ D.D.H has a low payback period, growth in value and capital gain, due to our designs being sustainable and unique, with only a selected number of D.D.H built in a year.
- ✓ We take the time to ensure that you are comfortable and happy with client communication being the foremost priority.





3-4 2.5 2 324 ✓ ✓ ✓

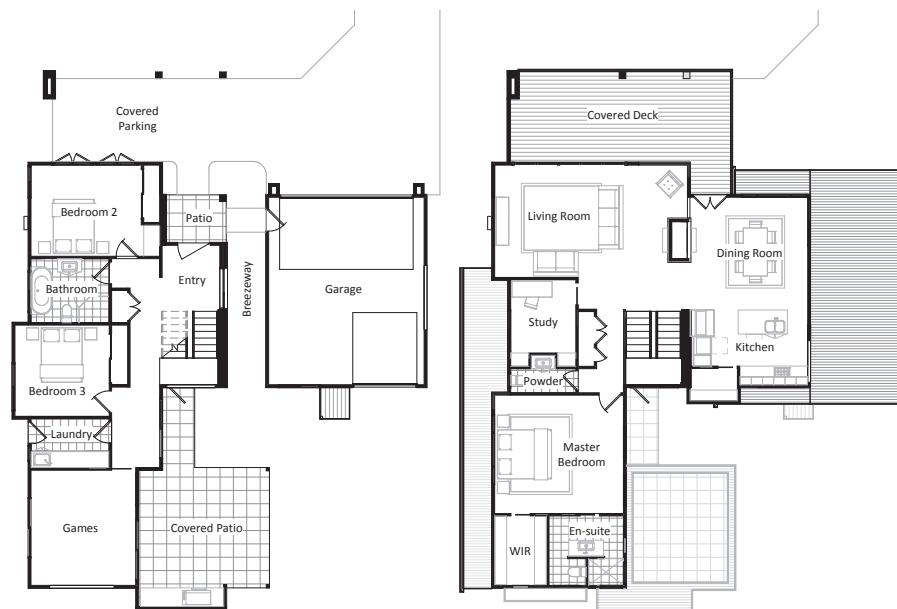
Frangipani

This two storey home has an amazing street appeal which also creates a very comfortable passive solar lifestyle.

Skillion roofs accommodate highlight windows for thermal control and utilisation of natural light.

This 'Healthy Home' is designed and constructed using the best of passive solar design and sustainable construction, zoning the external areas to fit with the accompanying internal areas.

With quality fittings and features **Frangipani** is pleasing to the eye internally and externally. This is a comfortable home to live in all year round.



3-5 2 2 226 ✓ ✓ ✓

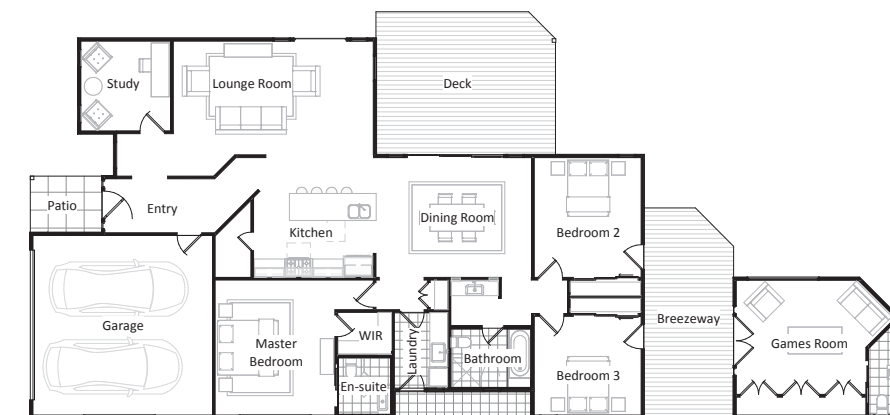
Banksia

This spacious home is perfect for the busy family, suiting a flat site with an eastern frontage.

Housing three bedrooms, study and separate games room, **Banksia** is a great design for the growing family.

Form and function provide for easy living with highlight windows that allow winter solar access, whilst achieving contemporary ambience.

This is a perfect 'Healthy Home' for you and your family, and incorporates passive solar design and sustainable construction, zoning the external areas to fit with the accompanying internal areas.





3-4 2.5 2 195-210 m² ✓ ✓ ✓ ✓

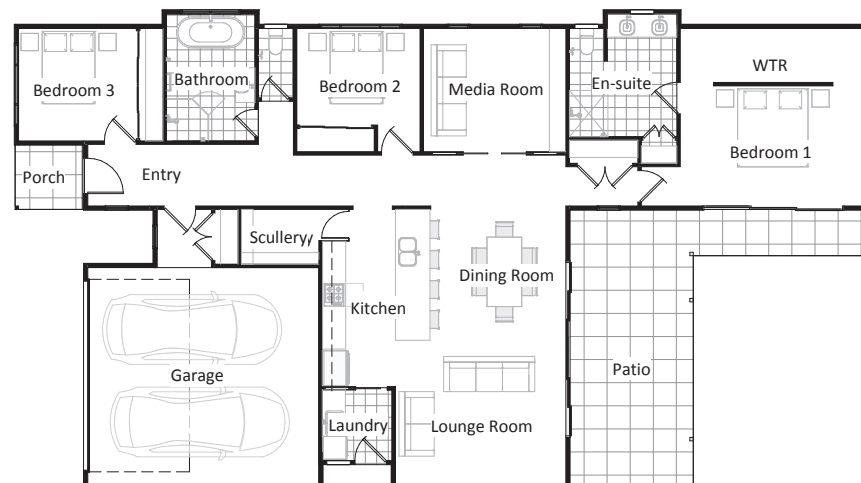
Grevillea

This single storey home is not only a great entertainer, it also fits the block comfortably.

This three bedroom plus media room home will suit your needs whether you are just starting out, eager to retire or the 'quiet getaway' type.

Utilising sustainable construction and the best of passive solar design methods, **Grevillea** is a wonderful 'Healthy Home.'

This stylish and comfortable design with its thoughtful layout includes quality fittings and features, thereby truly combining form and function to result in the perfect home.



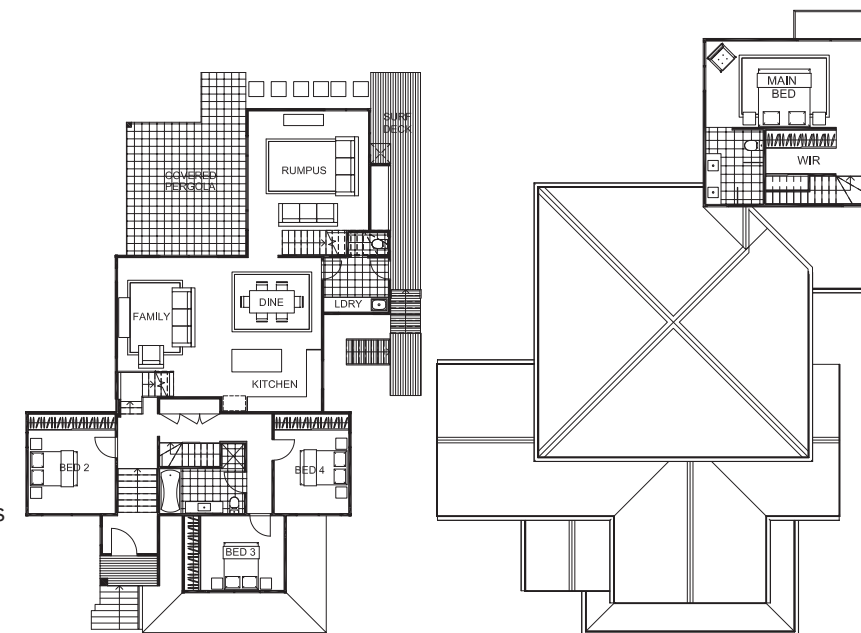
4 2.5 2 265 m² ✓ ✓ ✓ ✓

Melaleuca

Melaleuca is a beautiful, spacious coastal home, specially designed to suit a sloping block with south/western aspect.

The three levels of living space are zoned for ease of function and thermal comfort. Bedrooms and the main bathroom are on the first level, which leads up half a flight of stairs to the open plan family/dining and kitchen, which feature stacking doors leading to the covered pergola.

The rumpus is separated by a generous sliding door giving the ability to separate living spaces for either heating or privacy. Upstairs, the main bedroom features a viewing platform for the early morning surf check.



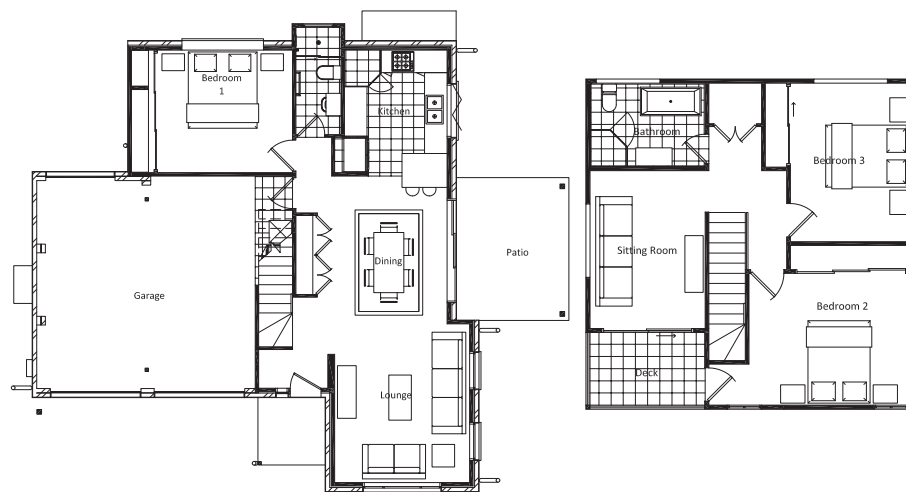


Tea Tree

This executive home with a soft roofline is an ageless style.

With the master bedroom and ensuite on the ground floor along with the kitchen, dining and lounge, **Tea Tree** is suited to all stages of your life. Stacking doors lead from the dining room to the covered BBQ area. Upstairs are two more generous bedrooms, the main bathroom and a sitting room with a covered deck.

The double garage has a drive through single door at the rear, giving easy access to the backyard. Sitting comfortably on a small block, this home has all you need. Layouts vary to achieve passive solar design.

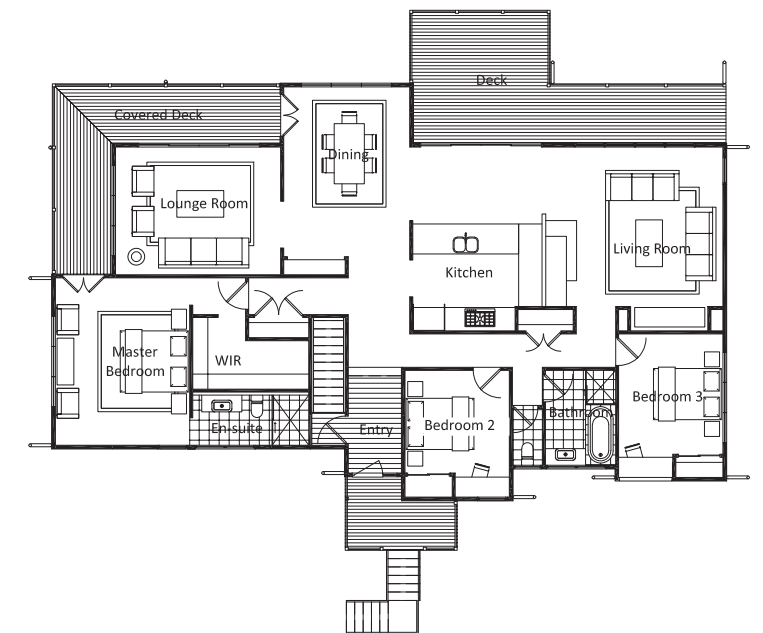


Coachwood

This lovely home has the ambience of a country homestead, while featuring a beautiful modern and clean line.

With space for an executive lifestyle, **Coachwood** is a three bedroom home that integrates well with its surrounding environment. Inviting the outside in, both the lounge and family rooms open to generous outdoor areas. With a central kitchen, the lounge and family rooms are also separated for privacy and heating. The main bedroom offers the luxury of a generous walk-in robe and ensuite.

Coachwood suits a block of land that features contours across the block, taking advantage of the lower side to house the double garage, laundry and internal staircase.





3 2 2 233 m² ✓ ✓ ✓ ✓

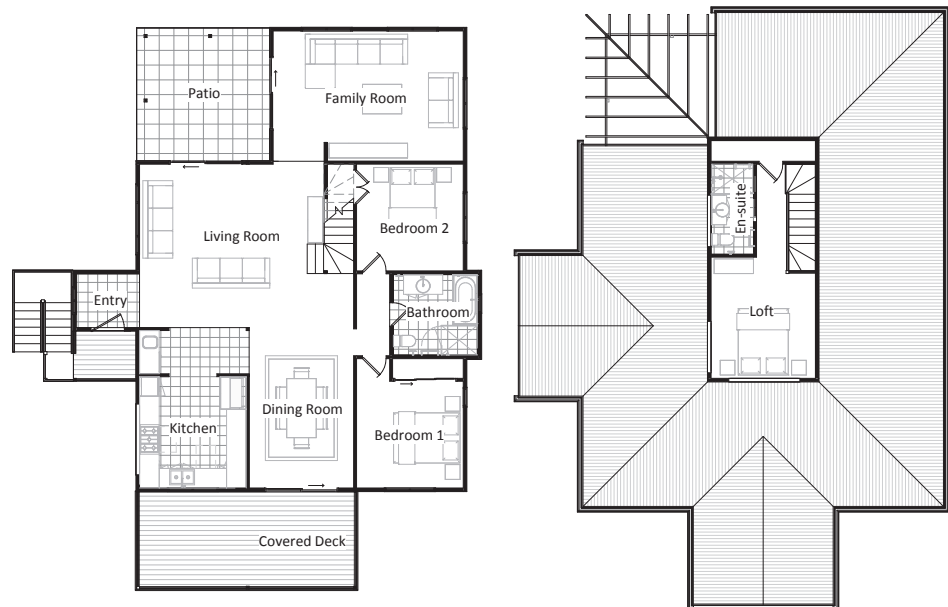
Lilly Pilli

Lilly Pilli is the perfect family home for a sloping site and appears right at home in a leafy environment.

This three bedroom design features one or two bathroom options, customisable to suit your family.

The separate family room is very spacious and accommodates for those teenage years, or just for some added privacy.

Full of ambience, this cosy home creates a comfortable lifestyle for the family that likes to be simply different. Layouts vary to achieve passive solar design.



COLORBOND® steel image.
Colour: Surfmist® Matt

“Beautiful people, beautiful work and designs. Excellence all throughout.”

– TUMBI UMBI CLIENTS



Distinctive Design Homes are proud sponsors of Care Flight.

“Thanks guys for the manner in which our retirement package was completed, the finished product is absolutely amazing.”

– TRINITY POINT CLIENTS

The Distinctive Design Homes Process

The Distinctive Design Homes range has streamlined processes, and systems to simplify the process whilst keeping the utmost attention to detail at all times so you are able to enjoy the journey of designing and building a sustainable home.

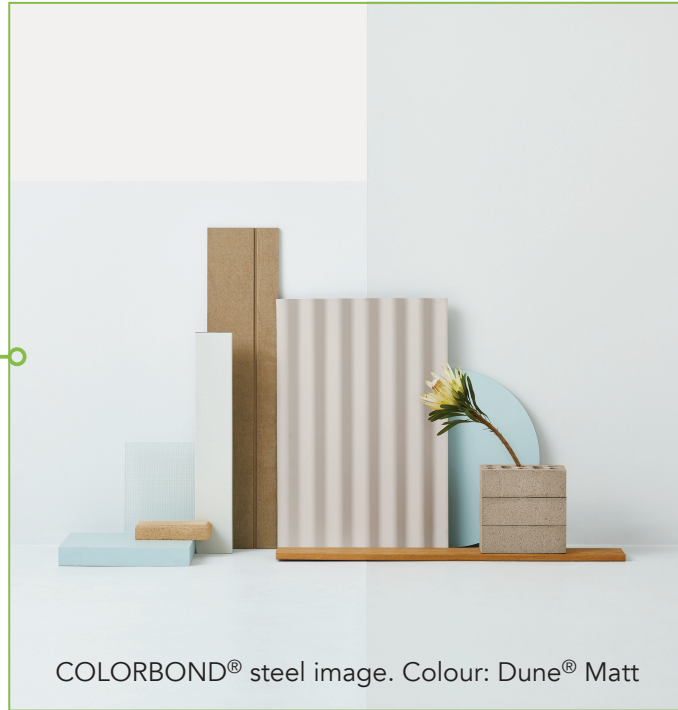


Initial Meeting

During our first consultation we aim to discover how we can best help you to achieve your desired home.

By discussing your needs and desires, we will help you discover a Distinctive Design Home which best suits your lifestyle, land topography and aspect.

Once you have selected your Distinctive Design Home, we are ready to make this home your own.



Your Selections

Your selected Distinctive Design Home can be modified to suit your requirements. After meeting with our design consultant you will select your home's colours, fixtures, appliances and any additional features you may require.

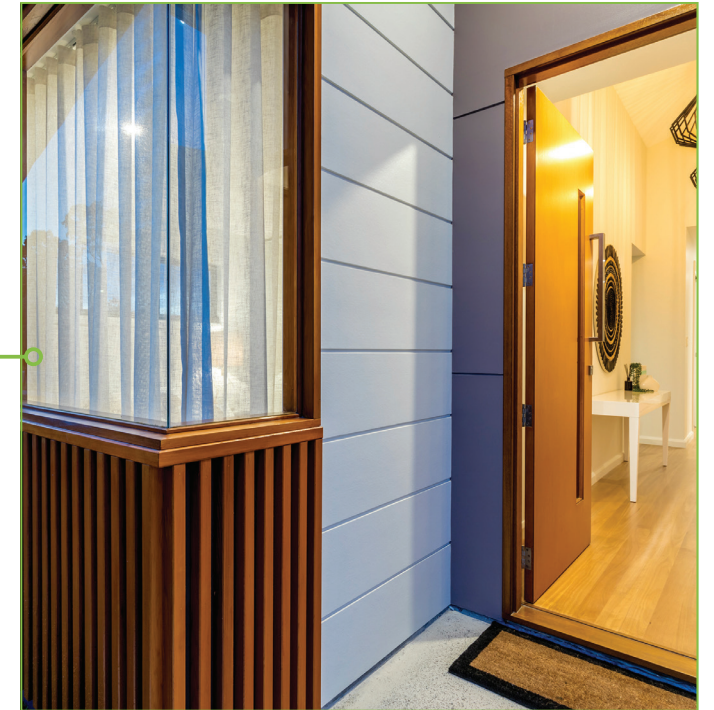
Once your design is finalised we will engage specialist consultants who will provide reporting to assist in preparing your new home tender.



Tender & Building Approvals

With your finalised design, and selections chosen we will present your tender package. In addition to the consultant's reports, we will prepare your council applications and manage the submission and approvals process.

You and your family are able to relax throughout this stage knowing Rustic Touch will take care of you and your project.



Construction

Each Home is constructed to the highest quality and standards by our in-house team of skilled carpenters.

During this stage, we implement fortnightly site meetings to guarantee project transparency, whilst ensuring client communication is a principal priority up until handover.



DISTINCTIVE DESIGN HOMES
BY RUSTIC TOUCH

5/12 Reliance Drive, Tuggerah Business Park, NSW
02 4389 1551 | info@rustictouch.com | rustictouch.com
Builder Licence No: 149681C