



RUSTIC TOUCH

HEALTHY HOMES



THE PEOPLE BEHIND RUSTIC TOUCH

Antony and Debra have been designing and building homes in the Central Coast and Hunter Region for over 30 years. The Yin and Yang of the team means all aspects of your requirements are met.

Tony and Debra are active members of the Building Designers Association, Housing Industry Association and Master Builders Association which ensures that they are up to date with legislation changes and new and innovative materials.

Tony is an accredited Building Designer and holds a Diploma in Building Construction. As Managing Director of Rustic Touch, he is passionate about visualising the best ecological design for a client, and constructing this into a quality and detailed home. Tony is committed to researching and using new sustainable materials that suit the project and changing environment.

Debra's interest in design started at a very young age and she has been active in the building industry for more than 30 years. Being the General Manager of Rustic Touch and a HIA Green Smart Professional, Debra ensures solar passive design is integrated with every project, and with the influences of building biology and Feng Shui, a healthy and harmonious home is created.





CENTRAL COAST AND HUNTER HOME DESIGNER AND BUILDER

As one of Central Coast's most awarded builders, Rustic Touch prides itself on creating 'Healthy Homes' which combine solar passive design with an emphasis on sustainable building practices.

At Rustic Touch each project is designed, created and built uniquely to reflect the client's personality and the environment they want to live in. Rustic Touch proudly showcase their work in the Industry Association Awards including the HIA-CSR Housing Awards, MBA Excellence in Building Awards and BDA Design Awards. Their latest

home became their twentieth award within the industry for both design and construction.

Client's needs, land topography and aspect are three main design elements that Rustic Touch use when creating your design. Construction is carried out to the highest standards with continual client communication being the major priority. Being recognised by their peers in the way of industry awards is a confirmation that Rustic Touch produce homes to the highest standard.



WE DESIGN AND
BUILD YOUR
HOME TO BE AS
INDIVIDUAL AS
YOU ARE





BUILDING DESIGN

At Rustic Touch we provide a complete range of building design services, from initial design through to construction, including engaging specialist consultants and management of all council applications.

It's important to remember that whether renovating, extending or building a new home with Rustic Touch, no two homes are alike.

Our aim is to create quality and 'Healthy Homes'.

To achieve this aim our designs are influenced by energy efficiency, sustainable housing and Feng Shui principles. It always helps if our clients understand their needs and have an idea of a style they like.

We suggest you keep a scrapbook of photographs or magazine clippings of homes or rooms that appeal to you. This helps us to design a home that is as individual as you are!

COLORBOND® STEEL MATT



Introducing COLORBOND® steel Matt, the elegant and versatile material that diffuses light for a soft, natural, textured appearance. Tested in some of Australia's harshest conditions, it's the long lasting finish that enhances your home design.



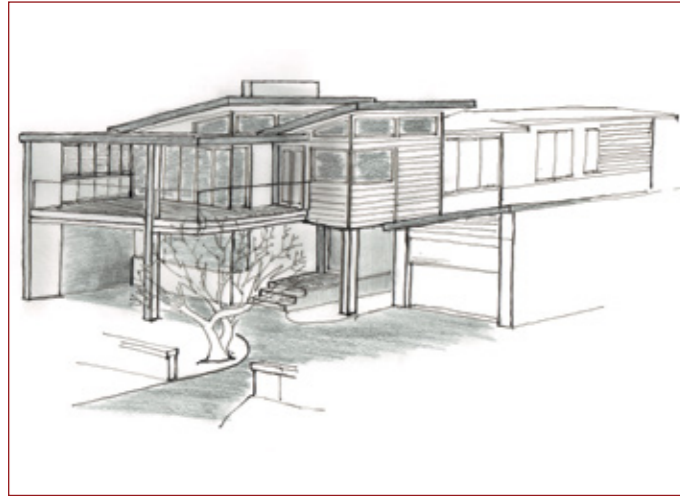
Available in five colours ranging from light, medium, to dark in depth of colour; COLORBOND® steel Matt provides you with the depth and flexibility to adapt to virtually any design you choose.

COLORBOND® is a registered trademark of BlueScope Steel Limited.

THE RUSTIC TOUCH PROCESS

INITIAL MEETING

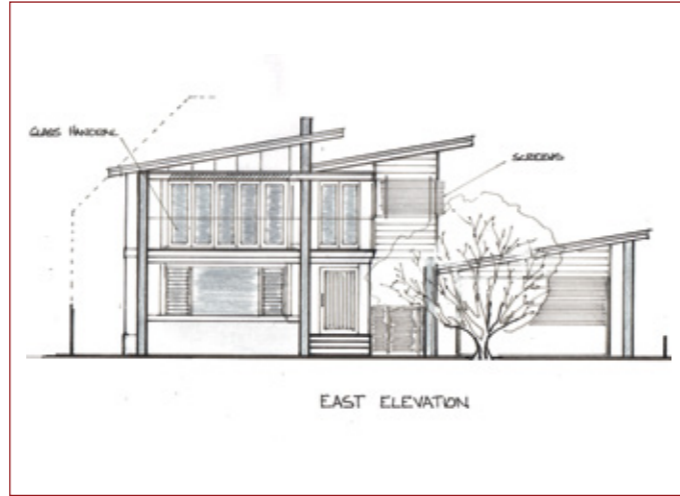
On first meeting we aim to discover how we can best help you to achieve your desired outcome. By listening to you, viewing your property and observing your likes and styles, we envisage a direction that best suits your project.



SCHEMATIC DESIGN

On signing of agreement our designers, equipped with all the information you have given, proceed to conceptual design.

Drawings will be produced that aim to fit your budget, vision and scope of works.



DESIGN DEVELOPMENT

After presentation of the design, two follow up meetings are then carried out to define the function of the concept, review materials and finishes reflective of your budget, and ensure your design is customised to your lifestyle.



FINAL ARCHITECTURAL PLANS

Architectural drafting commences on completion of design. These drawings are to comply with the relevant council's requirements.

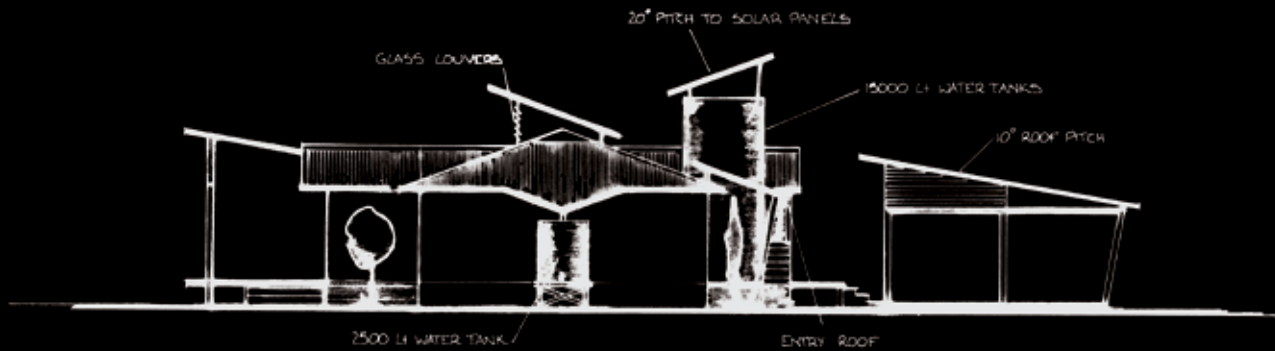
This includes specifications and required consultants' reports. 3D fly-around are also available at this stage.



CONSTRUCTION

Rustic Touch manage the construction stage ensuring the integrity of the design and specific details are met.

Rustic Touch want to ensure your home is built to the highest quality and standards. That's why Rustic Touch choose to use quality products like genuine COLORBOND® steel.



RUSTIC TOUCH
HEALTHY HOMES

Glenning Valley NSW 2261
Phone: 02 4389 1551
info@rustictouch.com
www.rustictouch.com
Builder Licence No: 149681C